

# 72 Crescent Drive South

BH2022/03840

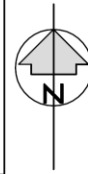
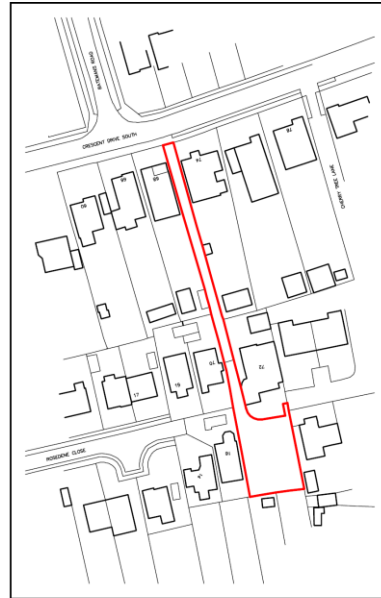


Brighton & Hove  
City Council

# Application Description

- Application to vary condition 1 of planning permission BH2018/00104 to allow the addition of photovoltaic solar panels to roof, alterations to external materials, changes to internal layout, the addition of a canopy over the front door and the provision of an access ramp

# Location Plan

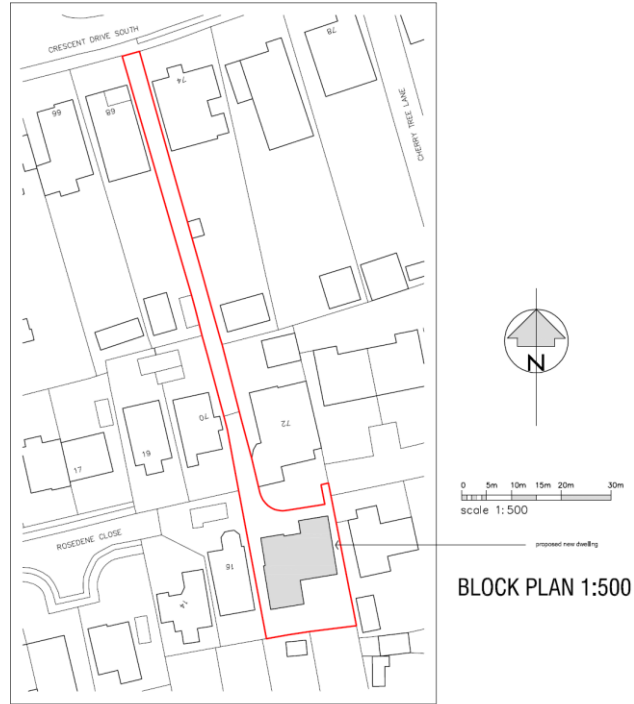


Ordnance Survey (c) Crown Copyright 2022. All rights reserved. Licence number: 100022432

LOCATION PLAN 1:1250



# Block Plan



BLOCK PLAN 1:500

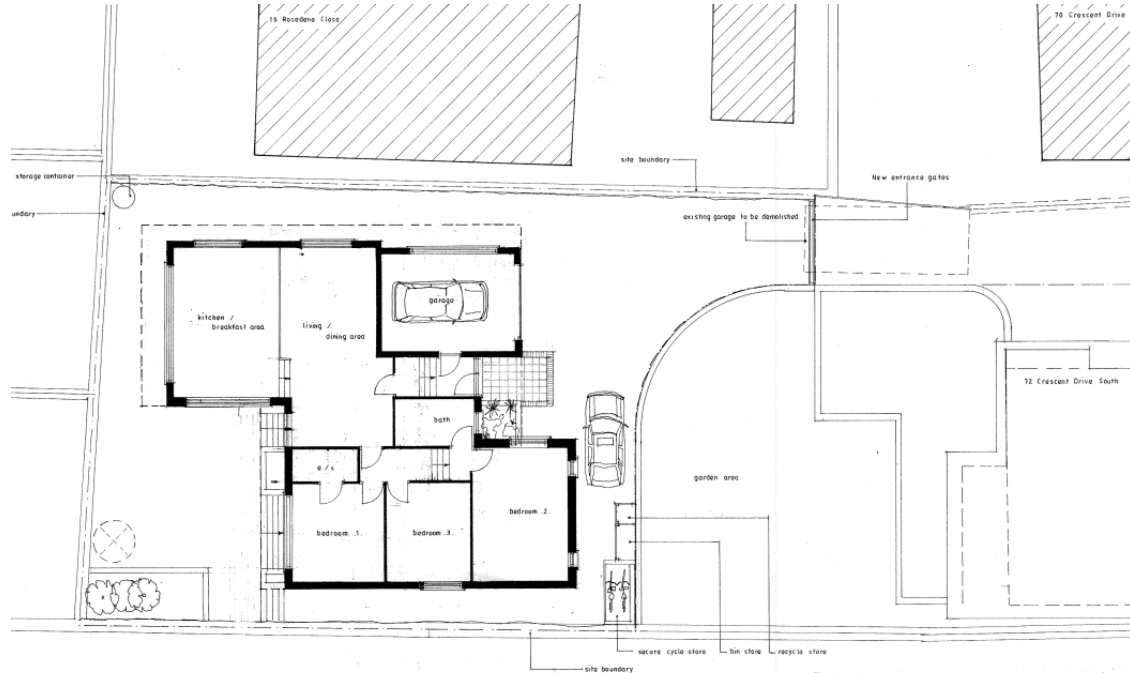
# Aerial photo of site before commencement of dwelling



# 3D Aerial photo of site before commencement of dwelling



# Approved Layout



**Material Key**

1/ Top Coping material - the coping is to be finished in the metal sheeting which is used on the sloping roof section of the building and colour to match.

5/ Smooth finish coloured render wall finish. ( Sandstone - Stone - Flinty Stone final colour to be up

6/ Windows - Powder coated aluminium double / triple glazed windows are to be finished in RAL 70





# Approved Elevations

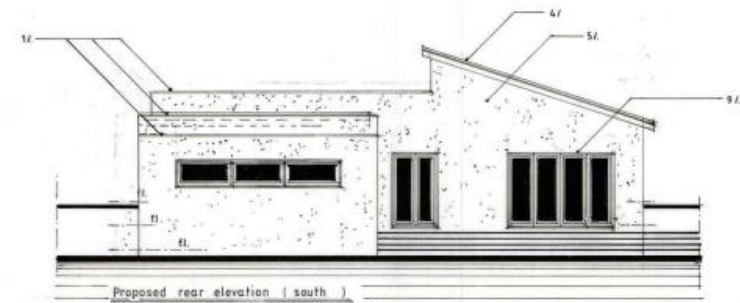
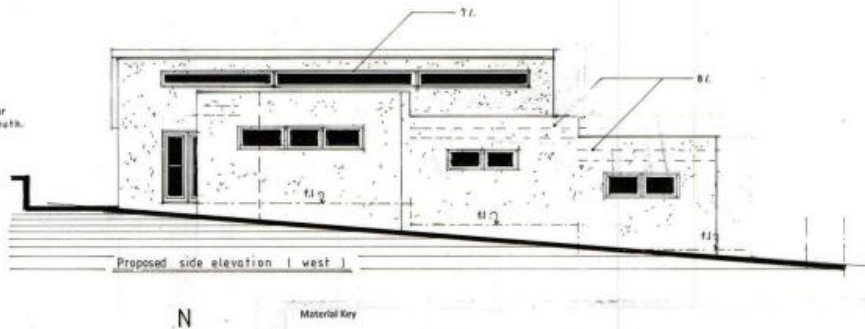
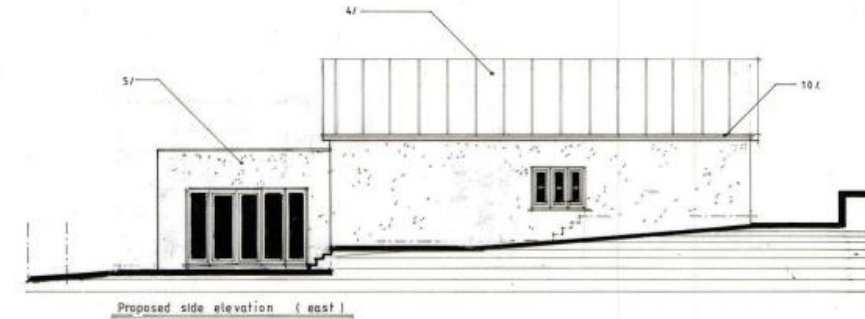
Drive South

oad

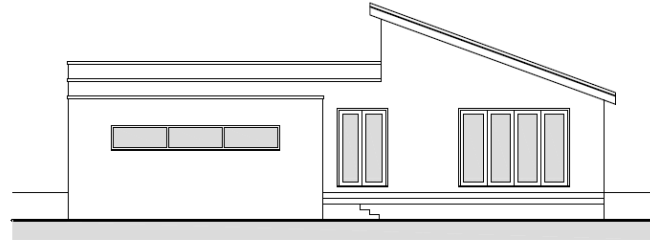
41

equipment  
128

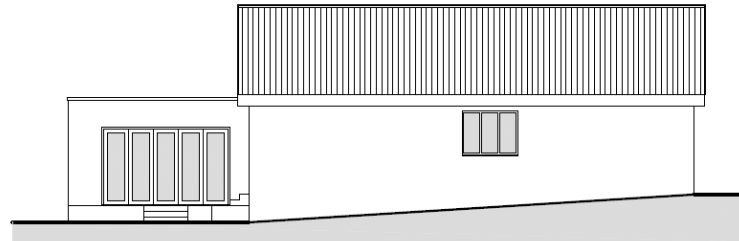
site land rear  
cent Drive South.



# Proposed Elevations – South and East



SOUTH ELEVATION



EAST ELEVATION

## MATERIALS

Walls: painted sand: cement render, colour: white.

Mono pitched roof : Cedral Thrutone fibre-cement slate, colour: blue-black

Flat Roofs: Sika-Trocal Type S single sheet polymeric, colour: Slate Grey.

Windows: polyester powder coated aluminum frames, colour: Anthracite Grey.

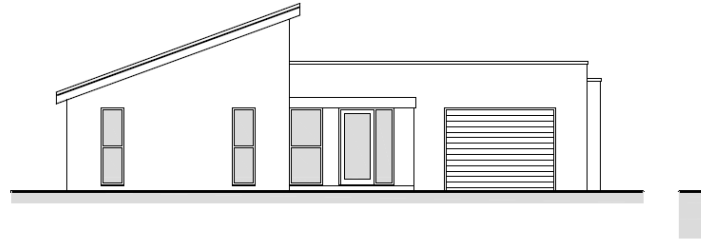
Front door: double glazed with polyester powder coated aluminum frames, colour: Anthracite Grey.

Folding doors: double glazed with polyester powder coated aluminum frames, colour: Anthracite Grey.

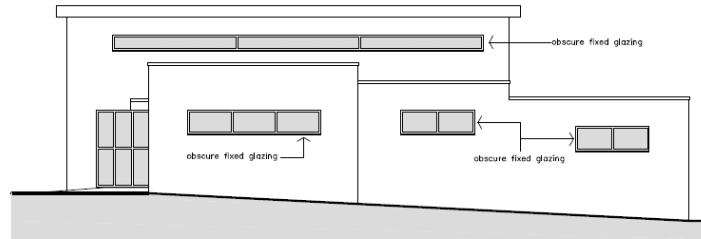
Garage door: polyester powder coated aluminum roller shutter, colour: Anthracite Grey



# Proposed Elevations – North and West



NORTH ELEVATION



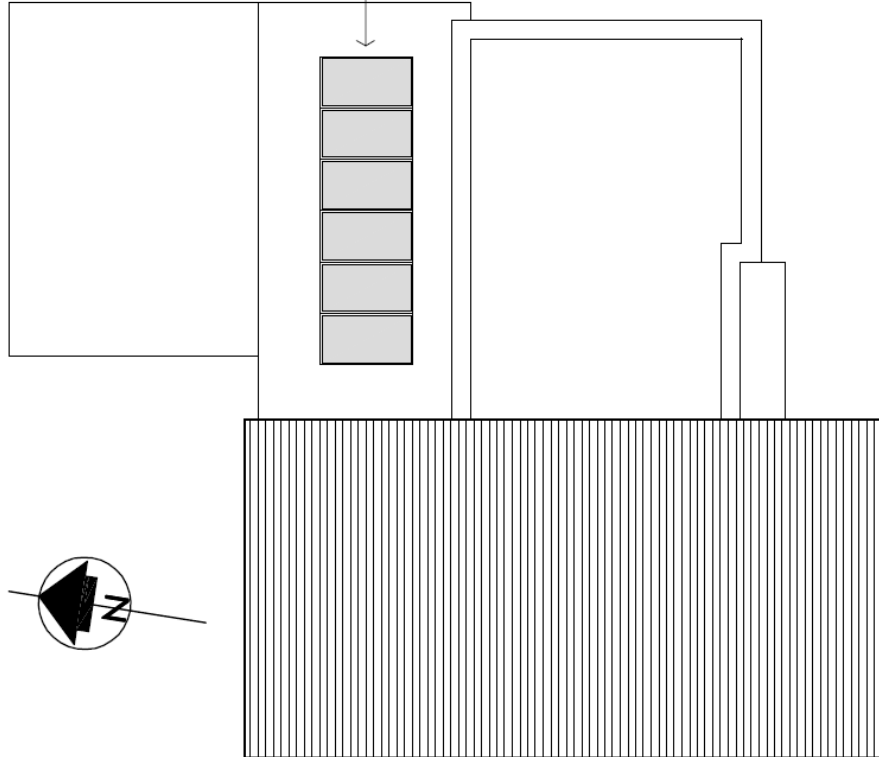
WEST ELEVATION

MATERIALS
Walls: painted sand: cement render, colour: white.
Mono pitched roof : Cedral Thrutone fibre-cement slate, colour: blue-black
Flat Roofs: Sika-Trocral Type S single sheet polymeric, colour: Slate Grey.
Windows: polyester powder coated aluminum frames, colour: Anthracite Grey.
Front door: double glazed with polyester powder coated aluminum frames, colour: Anthracite Grey.
Folding doors: double glazed with polyester powder coated aluminum frames, colour: Anthracite Grey.
Garage door: polyester powder coated aluminum roller shutter, colour: Anthracite Grey

# Proposed Roof Plan

---

Proposed Solar Panels

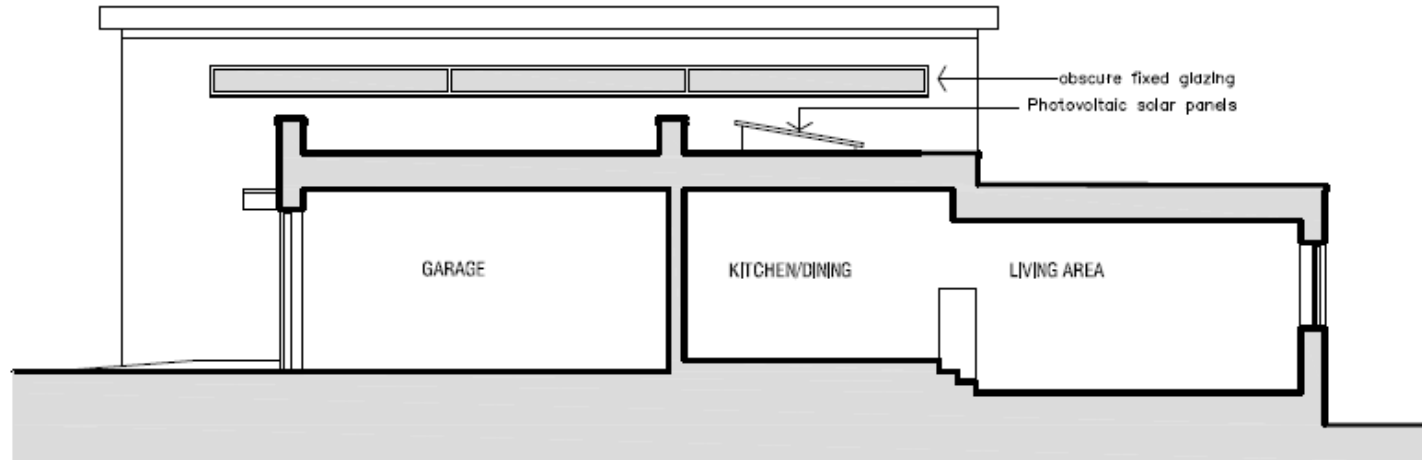


44

ID

# Section

Proposed Solar



SECTION

# Key Considerations in the Application

---

- Design
- Neighbouring amenity

# Conclusion and Planning Balance

- Revised design of dwelling considered acceptable in compliance with policies DM18 and DM21 of Brighton and Hove City Plan Part 2 and SPD12 guidance.
- Impact on amenity of neighbouring residents considered acceptable and complies with policies DM20 of Brighton and Hove City Plan Part Two.
- Recommend: **Approve**

